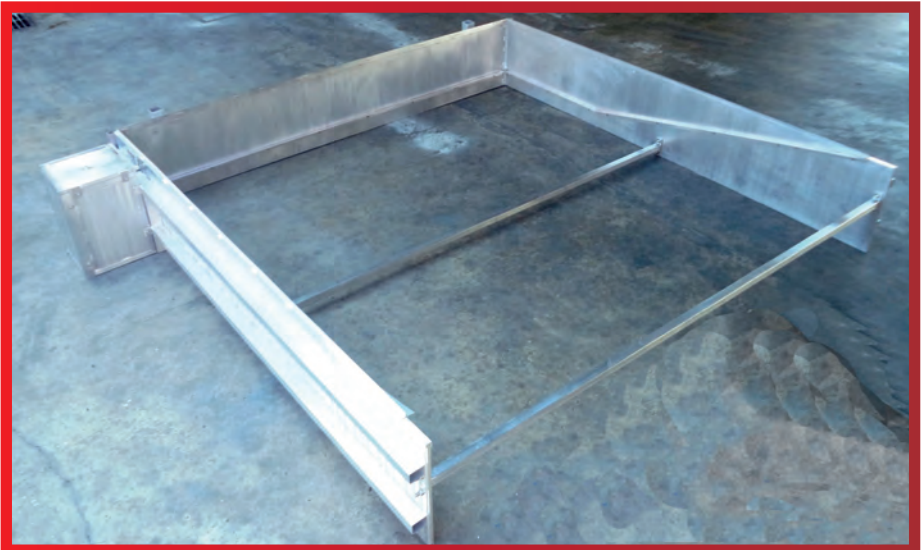




# ATHLETICS

Track & Field Equipment



### Water Ditch Kit

The water ditch kit is made from extra stable aluminium profiles. The water ditch kit consists of several parts. The head piece and side pieces are equipped with angles, which indicates the concrete level at the installation. The angle can be adjusted according to the thickness of the installed flooring system. The two side pieces are also held in place by two cross bars. The crossbars assure that the whole water ditch is aligned correctly. All dimension follow the IAAF regulations.

**Order No. SP 10285**

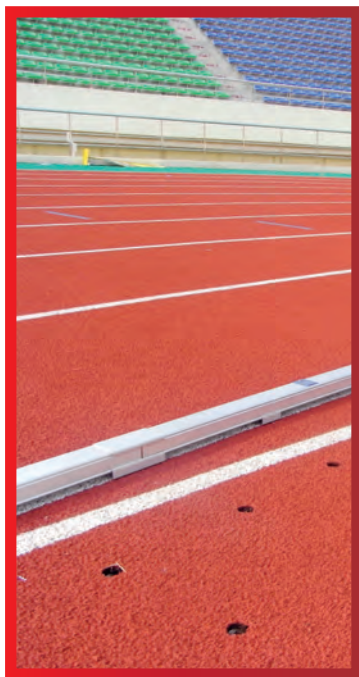


### Water Ditch Covering With Rim

The water ditch cover with rim is made from heavy duty aluminium profiles. The cover is put on top of the under frame for water ditch cover. The water ditch cover is used to cover the water ditch when not in use. The parts of the cover are connected with tongue and grooves joints. The last piece of the cover is slanted to assure a smooth surface level. The rim allows the item to be covered with the surrounding surface material.

**Order No. SP 10270**

\*Subject to technical alterations



### Aluminium Curbing

The aluminium curbing is made from special made anodized aluminium profiles. It is a mobile marker and separator of the running track. The set measures a total length of 400 m. The curbing is 60 mm wide and 50 mm high.

A standard set consist of :

34 pcs	Straight (5 m)
46 pcs	Curved radius 36,5 m (5 m)
90 pcs	Base cover 120 mm
90 pcs	Top cover 120 mm
250 pcs	Base cover with hole 60 mm
500 pcs	Base cover without hole 60 mm
250 pcs	Stainless steel pin 6 mm
250 pcs	Socket for stainless steel pin made from aluminium



On request this is available in shorter cutting lengths or in different radii according to IAAF regulations.

**Order No. SP 11260**



### Running Track Signs

The running track signs are made from aluminium. All signs are coloured anodized. The set consists of all required signs for all IAAF certified events.



Running track signs, made from aluminium.  
**Order No. SP 10790 - (8 lanes)**

Running track signs, made from aluminium.  
**Order No. SP 10810 - (6 lanes)**

Running track signs, made from aluminium.  
**Order No. SP 10820 - (9 lanes)**

\*Subject to technical alterations



### Water Ditch Hurdle

The water ditch hurdle is made from aluminium and a crossbar. There are two options for crossbars. Option 1 is a multi-layered laminated timber crossbar. Option 2 is a synthetic material one with an integrated aluminium core. The water ditch hurdle can be adjusted in height. The heights are 76.2 and 91.4 cm. The crossbar measures a total length of 3.66 m. The crossbar is a square 12.7 cm. The wood is painted with a special paint, which is long lasting even in a strong weather influence.



**Order No SP 10410**    **Wooden Crossbar**  
**Order No SP 10410/SY**   **Synthetic Crossbar**



### Standard Ground Socket For Water Ditch Hurdle

The standard ground socket for water ditch hurdle is made from aluminium. The socket is designed to match the square hollow profile 80x80 of the water ditch hurdle. The depth of this socket is 350 mm. The cover for this socket cannot be coated. If ordered together with the water ditch kit, the sockets are welded directly to the kit.

**Order No: SP 10330**

\*Subject to technical alterations



### Steeplechase Hurdle

The steeplechase hurdle is made from aluminium and a crossbar. There are two options for crossbars. Option 1 is a multi-layered laminated timber crossbar. The wood is painted with a special paint, which is long lasting even in a strong weather influence. Option 2 is a synthetic material one with an integrated aluminium core. The surface is more resistant to the puncture of the spike and will not destroy the structure of the material. The crossbar is a square 12.7 cm. The steeplechase hurdle can be adjusted in height. The heights are 76.2 cm (women) and 91.4 cm (men). The hurdle is available in two different lengths 3.96 m and 5.00 m. It is offered with and without base support. The hurdles measure a weight of approx. 90 kg. The weights are integrated in the legs of the steeplechase hurdle. The hurdle is certified by the IAAF.

**Order No. SP 10390/CB**

3.96 m With crossbar

**Order No. SP 10390/5 Meter/CB**

5.0 m With crossbar



### Trolley For Steeplechase Hurdle

The trolley for steeple chase hurdle is made from extra strong aluminium profiles. The trolley is used for store and moves the steeplechase hurdles. It provided space for one set of hurdles. It is equipped with 200 mm wheels, which allow easy moving of the trolley on track.

**Order No. SP 10400**

\*Subject to technical alterations



### Hurdle Competition

The competition hurdle is made from high grade aluminium profiles. The base profiles measure a cross section of 50x50x3 mm. The vertical profiles measure a cross section of 40x40x3 mm. The profile for the height adjustment is 33 x 33 x 3 mm. The crossbar is made from high quality, durable and extremely flexible wood. The wood is painted with a special paint, which is long lasting even in a strong weather influence.

The height of the hurdle can be adjusted in steps from 0.685 m to 0.762 m to 0.838 m to 0.914 m to 0.991 to 1.067 m. The scale for height adjustment is placed in a groove, so it can't be scratched will adjusting the height. The counterweight has to be adjusted depending on the adjusted hurdle height.

Order No. SP 10470



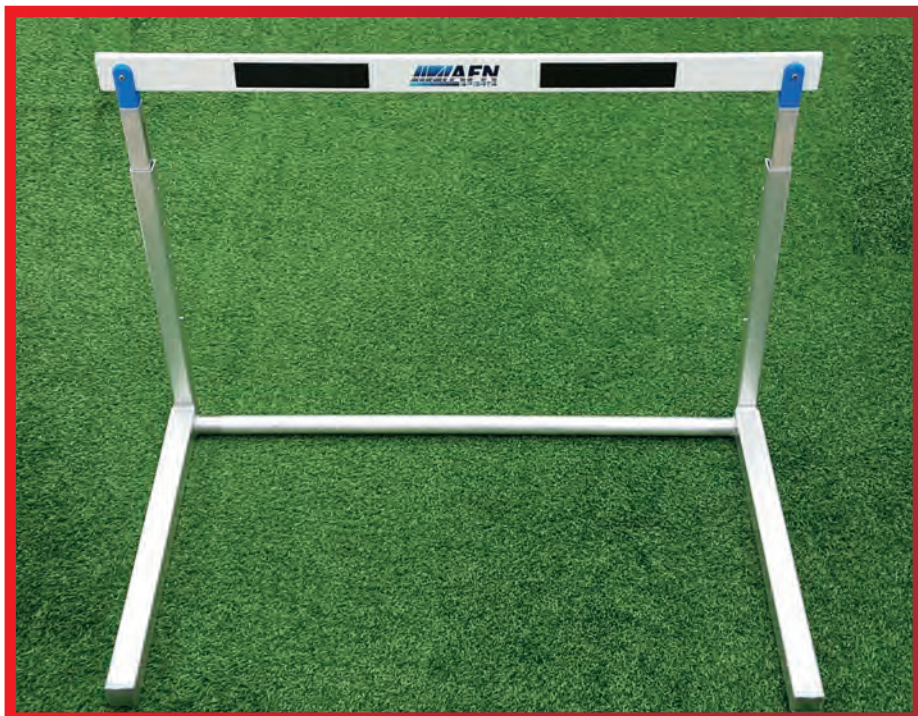
### Competition Hurdle "ECO"

The competition hurdle 'ECO' is made from high grade aluminium profiles. The base profiles measure a cross section of 50x50x3 mm. The vertical profiles measure a cross section of 40x40x3 mm. The profile for the height adjustment is 33x33x3 mm. The crossbar is made from high quality, durable and extremely flexible wood. The height of the hurdle can be adjusted in steps from 0.685 m to 0.762 m to 0.838 m to 0.914m to 0.991 to 1.067 m. The scale for height adjustment is placed in a groove, so it can't be scratched will adjusting the height.

Order No. SP 10475



\*Subject to technical alterations



### Training Hurdle

The training hurdle is made from high grade aluminium profiles. The base profiles measure a cross section of 50x50x3 mm. The vertical profiles measure a cross section of 40x40x3 mm. The profile for the height adjustment is 33x33x3 mm. The crossbar is made from high quality, durable and extremely flexible wood. The height adjustment is realized with a simple push button. The training hurdle is available in different sizes.

Heights: 66,71,76, 84, 91, 100, 106 cm

**Order No. SP 10480**

Heights: 60, 65, 71, 76, 80 cm

**Order No. SP 10490**

Heights: 40, 45, 50, 55, 60 cm

**Order No. SP 10500**



\*Subject to technical alterations



**Hurdle Trolley For 10 Hurdles**

The hurdle trolley is made from aluminium. It is designed to fit 10 hurdles. The trolley allows easy movement and storage for hurdles. The trolley is equipped with four wheels.

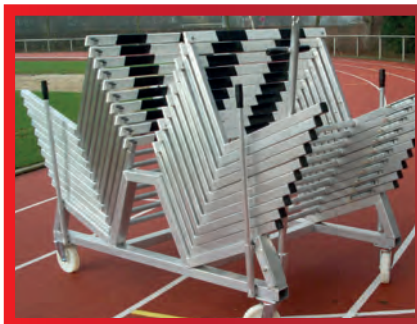
**Order No. SP 10510**



**Hurdle Trolley For 40 Hurdles**

Made from special aluminium profiles. It provides place for up to 40 hurdles. The trolley is easy to be moved and the turning wheels enable to store in any direction.

**Order No. SP 10530**



**Hurdle Trolley For 20 Hurdles**

Made from special aluminium profiles. It provides place for up to 20 hurdles. The trolley is easy to be moved and the turning wheels enable to store in any direction. Side loading model.

**Order No. SP 10520**



**Hurdle Cart For 40 Hurdles**

The hurdle cart for 40 hurdles is made from aluminium. The cart measures a width of 1.2 m. The length of it is approximately 4.20 m. It provides space for up to 40 hurdles. The hurdles need to be lifted to a height of 60 cm to be put on to the cart. The cart is constructed in a manner that it can be loaded from behind. It is equipped with 200 mm wheels to reduce the load on the running track.

**Order No. SP 10531**

\*Subject to technical alterations



## Equipment Trolley



The equipment trolley is made from special aluminium profiles. It measures 2x1 m. The trolley is designed to carry loads up to 1 ton. Therefore, it is equipped with special castors. The wall elements can be flapped down on three sides for easy loading and unloading of the equipment.

**Order No. SP 10640**



## Judges Stand

Platform for judges, to seat 6, 8, 10 or 12 people, made of aluminium. The basic framework is constructed from aluminium profiles (80 x 60 x 3 mm) with highly rounded edges. The steps consist of aluminium side profiles which are inserted all around into an end section profile. The guard rails can be screwed on so that the platform takes up less space when stored. The wheels, with a diameter of 200 mm, allow the whole platform to be moved easily by one person. The axes for the wheels are inserted in the basic frame and welded all around.

On request our judges stand available in different colors

### Order No. SP

- 10010:** Stand for 10 people
  - 10020:** Stand for 10 people with plastic seat
  - 10030:** Stand for 6 people
  - 10040:** Stand for 6 people with plastic seat
  - 10050:** Stand for 8 people
  - 10060:** Stand for 8 people with plastic seat
  - 10070:** Stand for 12 people
  - 10080:** Stand for 12 people with plastic seat
  - 10081:** Stand for 24 people with plastic seat
- Bucket seats available in different colours.



#### Team Winner Podium

The winner podium is made from special aluminium profiles. The podium measures a length of 240 cm and a width of 80 cm. The steps for the different places are up to 50 cm high. The item is powder coated. It is available in assorted colours.

**Order No. SP 10241**



#### Team Winner Podium 'PRO'

The Team podium is made from extra strong special aluminium profiles. It is delivered in three parts. Each piece measures a length of 200 cm and a depth of 60 cm. Its heights are 30 cm, 40 cm & 50 cm. The podium is white powder coated. The top surface is covered with EPDM rubber, which provides anti slip properties. The parts are labelled with the respective numbers 1, 2, 3.

**Order No. SP 10251**



#### Team Winner Podium 'ECO'

The team winner podium is made from a sturdy aluminium structure. It provides space for the first three athletes. The position of the athlete are marked on both sides. The position measure different heights. Each position provides space for four athletes. Length : 4.0m

**Order No. SP 10250**

\*Subject to technical alterations



### Starter Podium with Display Aluminium Surface

The stadium podium with display is made from aluminium. It measures around 80x80 cm and it hexagonal shaped. The top of the stand is equipped with an anti-slip surface. The item is equipped with a display. For this model the display is not covered with polycarbonate sheets.

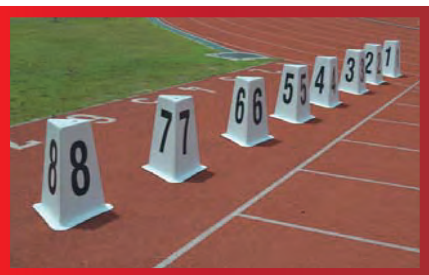
**Order No. SP 10180**



### Finishing Post

The finishing post is made from aluminium. The posts have a square base frame. They are equipped with a mechanism to hold the finishing line. On request the item can be powder coated.

**Order No. SP 10200**



### Starting Boxes

The starting boxes are made from fibreglass reinforced plastic. The boxes also provide space to place indicator for false starts. The boxes are stackable.

**Order No. SP 10580**

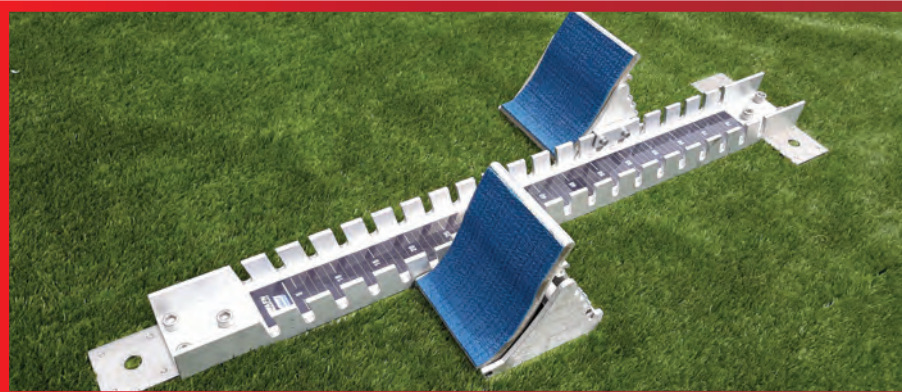
\*Subject to technical alterations



### Starting Block Model 'Olympia'

The starting block 'Olympia' is made from aluminium. The parts are casted. It is equipped with a handle. The block is fixed to the ground with spikes. The steps are covered with rubber and are height adjustable.

Order No. SP 10560



### Starting Block Competition

The competition starting block is made from aluminium. The parts are extruded. The block is fixed to the ground with spikes. The steps are covered with rubber and are height adjustable.

Order No. SP 10550

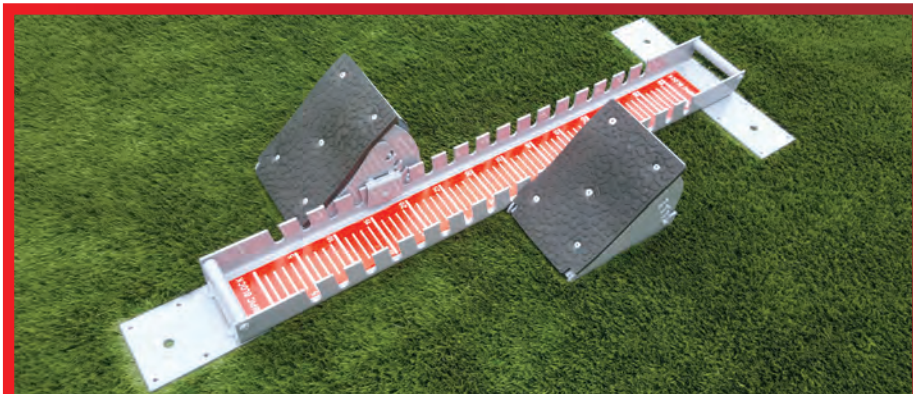


### Transport Cart For Starting Blocks

The transport trolley for starting block is made from aluminium. It provides space for a number of starting blocks. The trolley is equipped with wheels, which allow an easy handling of the stored starting blocks.

Order No. SP 10570

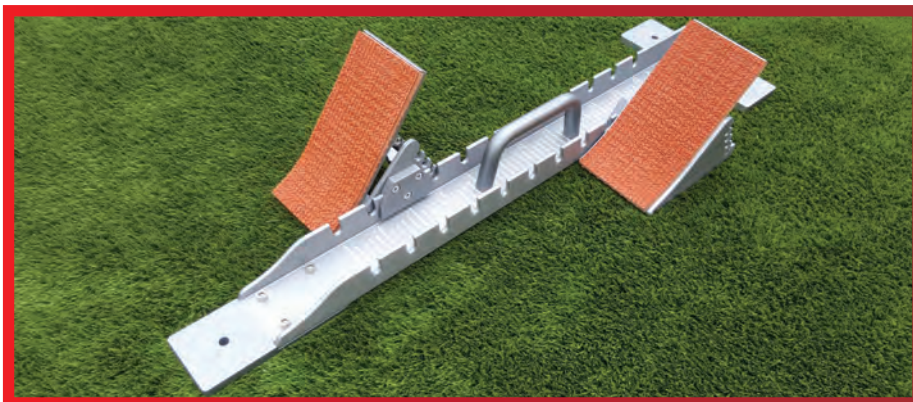
\*Subject to technical alterations



### Starting Block 'Junior'

Pedal and central rail made from high quality cast aluminium. Light weight and adjustable pedals. Thick hard wearing rubber. Anti slip spike holes in aluminium rails. Suitable for school and club house use.

Order no. SP 10562



### Competition Starting Block 'Jinoel'

Top quality block meets the needs and budgets of all schools and athletes. High quality all cast aluminium construction. An easy carry handle ensures not to lose the pedals during transportation and that pedals will lock firmly into place when placed on the track surface. Certified by IAAF.

Order no. SP 10561



\*Subject to technical alterations



**Mobile Display Board**

The mobile display board is made from high quality aluminium profile. It is equipped with a seat, wheels and a mobile chassis. The mobile chassis provides the space to display the necessary scores. It comes with eight number plates.

**Order No. SP 10110**



**Lap Indicator With Bell**

The lap indicator with bell is made from aluminium. It displays the numbers of laps remaining. For the indication of the last lap the brass bell can be rung.

**Order No. SP 10160**



**Manual Wind Speed Display**

The manual wind speed display is made from stable special aluminium profiles. The item is white and blue powder coated. It displays the wind speed using two digits and the direction with the +/- sign. The two number tables are included in this item.

**Order No. SP 10615**

\*Subject to technical alterations



### Athletic Bench

The athletic bench is made from special aluminium profiles. It measures a length of 2.5 m and a height of 2.1 m. The bench provides space for 10 persons. It is equipped with a collapsible roof. For safety reasons the hooks for the cloths are on the back side of the bench. The bench is equipped with a handle and two extra-large nylon wheels, which allows one single person to move the bench to the required location.

Order No. SP 11220